

Sierra Sage



Volume 25 Issue 23 Published Bimonthly by the Sierra Sage of South Orange County Group of the Sierra Club
May 1, through June 30, 2017

This is a great year for Wildflowers. You are invited to join us for a presentation Orange County Wildflowers by Bob Hansen, who took most of the photographs he will share.

We also will cover upcoming hikes, current status of San Onofre Nuclear Plant fuel storage issue, and other topics of interest.

WHERE: Norman Murray Community and Senior Center
24932 Veterans Way, Mission Viejo, CA

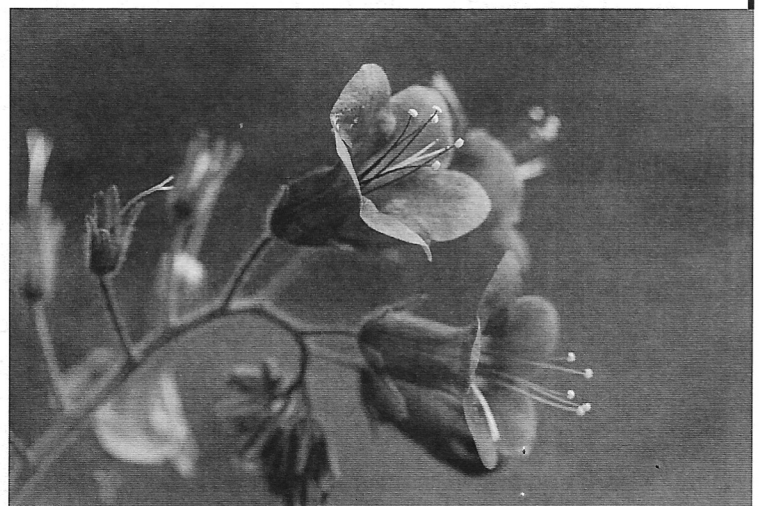
WHEN: 7:00 PM, Tuesday, May 23, 2017

ROOM: Juniper

DIRECTIONS:

Northbound on I-5, exit at La Paz, turn right onto La Paz, cross Marguerite Parkway and proceed over Oso Creek. Turn left onto Veterans Way and drive to the Murray Center Parking lot.

Southbound on I-5, exit at La Paz, turn left onto La Paz, cross Marguerite Parkway and Oso Creek. Turn left onto Veterans Way and drive to the Murray Center Parking Lot



Be Part of the Work at San Onofre

The San Onofre Task Force was established by the Sierra Club Angeles Chapter after failure of the steam generator system caused a sudden shutdown of the plant in 2011. The Task Force has been a part of two important "wins" at San Onofre and is currently working on a third and final goal for safest and best outcomes.

Our History

In May 2012 we were among the voices urging the U.S. Nuclear Regulatory Commission to deny fast-track restart of the plant, as requested by Edison and endorsed by NRC's technical review team. We said that given the safety record, restart should not occur without a full public hearing process that included independent experts. The NRC agreed with us and Edison closed the plant rather than carry its costs through an extensive review process.

In October 2015 we were among the voices urging the California Coastal Commission to approve construction of a facility at San Onofre that would allow removal of spent nuclear fuel rods from potentially dangerous pools to much safer dry storage in canisters housed in a massive bunker. This was a hotly disputed issue even within the Sierra Club but we prevailed. The facility is now scheduled to be completed by the end of 2017. The spent fuel is going to start being moved from pools to the dry storage structure shortly thereafter, with completion of the movement of the spent fuel to the structure by the end of 2020. When the movement is completed in 2020, the danger from the spent fuel rods will be lessened, but by no means will the problem be permanently solved.

Since 1983 the Sierra Club has advocated for a permanent repository as the only adequate long-term nuclear waste storage solution. In the last 18 months our focus has been to reinvigorate the national dialog on a permanent repository for deep geologic storage of nuclear waste at locations remote from plant sites, coastal areas, earthquake zones and population centers.

During the last year we have also taken part in discussions regarding Consolidated Interim Storage (CIS) as part of an integrated nuclear waste management system. In April 2016 the Sierra Club national board of directors approved a policy on this issue which concludes with this sentence: "It is imperative for spent fuel from nuclear plants to be moved into safer temporary storage and for an effective long-term storage strategy to be developed as quickly as possible."

The Work Going Forward

A range of key issues lie ahead. The Sierra Club is lead environmental representative on the Community Engagement Panel, the only ongoing forum that monitors and discusses events related to decommissioning San Onofre. We have joined with Coastkeeper and the Ocean Institute to create a sense of urgency about removing nuclear waste from San Onofre. In response, Edison accelerated its schedule to get the job done by 2032 rather than 2052. This 20-year advance in schedule must be monitored to assure timelines are met.

35 years ago the U.S. passed a nuclear waste management act. It provided funds for a permanent repository, which has never been built. Congressman Darrell Issa, in whose district San Onofre is located, has introduced HR 474, the Interim Consolidated Storage Act of 2017. It allows funding for CIS from the Nuclear Waste Fund. This bill merits support. It is bipartisan and will give priority to stranded spent nuclear fuel from shutdown reactors. We must press for a Congressional Representative to ask for a Department of Energy

(DOE) analysis of the bill.

Even if interim storage were available tomorrow, only 9 of the 13 shutdown sites are named in the DOE preliminary evaluation of Removing Used Nuclear Fuel from Shutdown Sites. San Onofre is not on the DOE list. Given the risks arising from its vulnerable location, we must work to advance San Onofre's place in the queue. SCE has assured us the necessary federal licenses are on target. We must also get the California Energy Commission (CEC) and the State Lands Commission (SLC) to give priority to California's stranded spent nuclear fuel sites. Soon the SLC will present its draft Environmental Impact Statement (EIS) addressing concerns about San Onofre's decommissioning plans. We will be a part of the review and comment process.

Rail spurs and truck transport capacity at San Onofre must be maintained for the waste to be removed. In our statement to the California Coastal Commission, the Task Force urged that attention be given to this need. SCE no longer plans to remove the roads and rails before all of the nuclear waste is removed from San Onofre.

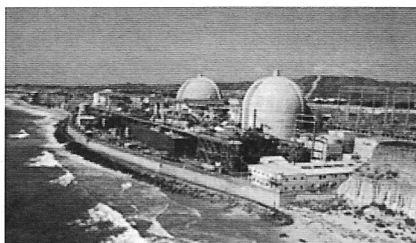
Interim storage is under the authority of the U.S. Nuclear Regulatory Commission (NRC). The Sierra Club is reviewing NRC license procedures for a CIS facility proposed by Waste Control Specialists in Andrews County, West Texas. We support "consent-based siting" - the willingness of communities to provide sites rather than having facilities forced upon them. This is an essential part of environmental justice in nuclear waste management. Further, we believe host communities should have authority for stakeholder review including on-site inspections. We will advocate for including these provisions and making safety requirements a part of the licensing plan.

How to Connect

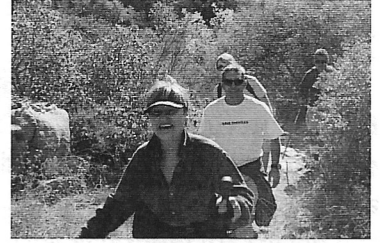
- A full San Onofre update is given every other month at membership meetings of Sierra Sage, the Angeles Chapter group representing South Orange County. The review of recent events is followed by a question-and-answer session. You are invited to attend. The meetings are held at the Norman Murray Senior and Community Center in Mission Viejo at 7:PM on the fourth Tuesday of each odd numbered month. Thus, the next meeting is May 23rd.
- Every three months the Community Engagement Panel meets for decommissioning updates from Edison, reports from experts on special topics, review of legislation in Congress, and public comment. As a panel member of the CEP, the Sierra Club takes an active part in these meetings. Their next meeting is May 11th at the Laguna Hills Community Center. You are invited to attend.
- Detailed news stories are provided in most editions of The Southern Sierran, a monthly on-line Angeles Chapter newsletter that reaches 90,000 Club members and supporters. Look for San Onofre stories in the Sierran. Other sources include the Sierra Sage Group of South Orange County bi-monthly newsletter at sierrasage.org

For more information, contact Marni Magda at marnimagda@gmail.com or Glenn Pascall at gpascall@att.net

The Sierra Club Angeles Chapter San Onofre Task Force



Outings



Wednesday, May 03, 2017 9:00 AM
0407-Orange County/Sierra Sage Outing
O: Arroyo Trabuco

5 mi, 700' gain/loss. We'll descend into the lush riparian greenery of the arroyo, then follow singletracks and dirt roads gently down-canyon before returning to our starting point. There are a few stream crossings. Though the water will be very shallow, hiking sticks are recommended. Meet (9:00 am at Beebe Park, 34190 Olympiad Rd, Mission Viejo. From I-5, take Alicia Pkwy east, turn R on Jeronimo (2nd major cross street) and follow it to the end: then R on Olympiad and almost immediately L at Beebe Park. Parking lot is free. Bring water, snack, light hiking shoes. Rain cancels..

Ed Maurer 949-768-0417 balois@cox.net
Sylvia Stevenson 949-616-2765 sjstevenson2828@yahoo.com

Saturday, May 06, 2017 7:45 AM
0417-Sierra Sage of SOC Group Outing
O: Trail Maintenance on the Lucas Canyon Trail

O: Sierra Club (Orange County Group, Sierra Sage Group, & San Geronio Chapter) volunteers, male and female, maintain trails in the San Mateo Canyon Wilderness. In May we will work on the Lucas Canyon trail. Work will primarily involve improvement by lopping branches or removing plants that restrict the corridor. Some tread improvements could also be required. No experience is needed and tools are provided. Bring work gloves, sturdy boots, water, lunch. The hike is 6 miles one way, with 600' gain, with a short car shuttle at the end. We will meet at the south OC ride share at 7:45 am to car pool to the trail head. Those coming from Riverside should contact the leader for meeting time and location. Rain or critical fire danger will cancel.

John Kaiser 714-968-4677 jkai39@gmail.com
Rich Maxey 949-310-5134 richmaxey@yahoo.com

Wednesday, May 10, 2017 8:00 AM (Time Tentative)
0407-Orange County/Sierra Sage Outing
O: Bear Springs via Holy Jim Trail

CONTACT LEADER FOR DETAILS....May 10 Wed Orange County/Sierra Sage O: Bear Spring via Holy Jim Trail: 9 mi, 2245' gain/loss. We may see early wildflowers as we make a steady but moderate ascent to the shady trees at Bear Spring. It's another 3 mi to the top of Santiago Peak, but we won't go that far today! If we feel like it, however, we may detour to visit Holy Jim Falls on our way back. Please notify leaders if you wish to join this hike, if you can drive, and how much room you have for additional passengers, as we will carpool over a bumpy dirt road. Bring at least 2 qts water, lunch, hiking boots. Rain cancels.

Linda Ledger 949-444-1285 linda.ledger@me.com
Rich Maxey 949-310-5134 richmaxey@yahoo.com

Saturday, May 13, 2017 8:00 AM
0417-Sierra Sage of SOC Group Outing
O: Lyon canyon hike

8 mile 1100 foot gain. Hike from Blue Jay campground to Lyon canyon falls on the San Juan and Chiquita trails. Lunch overlooking the fall. Return to Blue Jay. Meet at 8:00 AM at the South OC ridge share in San Juan Capistrano. Bring 2 quarts water, lunch and lugsoles. Rain cancels. Contact leaders for more information.

Russ Brown 949-481-5295 russbrown3@cox.net
Linda Ledger 949-444-1285 linda.ledger@me.com

Wednesday, May 17, 2017 8:00 AM
0407-Orange County/Sierra Sage Outing
O: San Juan Trail

11 mi, 550' gain, 3100' loss. If it's clear, we'll see Catalina as we hike from Blue Jay Campground mostly downhill to Hot Springs Canyon. Meet 8:00 am South Orange county rideshare point with 2 qts water, lunch, hiking, lugsoles. Hiking poles highly recommended for long downhill. Car shuttle.

Helen Maurer 949-768-0417 7gables@cox.net
Sherri Sisson 949-786-7681 sksisson@gmail.com

Saturday, May 20, 2017 to Sunday, May 21, 2017
0417-Sierra Sage of SOC Group Outing
O: San Mateo Wilderness Backpack

Backpack into San Mateo Canyon, 3.5 miles and 500-foot elevation loss to camp. The canyon features a rocky creek, sandy pools, oak forests, and abundant springtime flowers.

From the Fisherman's Camp trail head, we will hike to Castle Rock on the San Mateo Trail and set up camp. After lunch, we will hike down canyon to an area the Cleveland National Forest calls "very remote and rugged" -- it often needs trail maintenance, and we will lop as we go. Sunday morning, optional visit to the Bluewater Trail; hike out after lunch. Easy backpack for beginners. Register with the leader. *Daniel Donovan 562-596-1225 daniel.paul.donovan@gmail.com*
John Kaiser 714-968-4677 jkai39@gmail.com



Saturday, May 20, 2017 9:00 AM
0417-Sierra Sage of SOC Group Outing
O: Colinas Ridge Hike

This is a 5 mile, 500 gain, hilly hike with excellent views of Capistrano Valley, the ocean and the hills. Meet 9:00am at the McDonald's parking lot, at the corner of Marina Hills Drive and Golden Lantern in Laguna Niguel. Bring snack, water, sun gear, lug sole boots. *Sylvia Stevenson 949-616-2765 sjstevenson2828@yahoo.com*
Linda Ledger 949-444-1285 linda.ledger@me.com

Sunday, May 21, 2017 8:30 AM

0417-Sierra Sage of SOC Group Outing

O: East Ridge/Bell Canyon Loop Hike, Caspers Regional Park

This is a 7 mile hike, 600' of gain/loss. Great views of Bell Canyon from the heights of East Ridge. Meet at 8:30 am at the South Orange County Rideshare point (SE corner of Ortega hwy and Rancho Viejo Rd, in front of Ball Park Pizza) and we will carpool into Caspers Regional Park. We plan to hike on the East Ridge Trail, Cougar Pass Trail, Oso Trail, Bell Canyon Trail, Quail Run Trail and East Flats Trail back to the parking lot. Bring 2 qts/Liters of water, munchies, a hat, and your camera and/or binoculars.

Michael Sappingfield 949-633-6993 mikesapp@cox.net

Rich Maxey 949-310-5134 richmaxey@yahoo.com

Wednesday, May 24, 2017 9:00 AM

0407-Orange County/Sierra Sage Outing

O: Bear Canyon Loop

6.3 mi, 1300' gain up from the Candy Store through chaparral and oaks and wildflowers, then up the ridge to 4 corners and back by shady Pigeon Springs. Meet 8:30 am at South Orange County rideshare point, or 9:00 am at the Candy Store on Ortega Hwy parking lot with Forest Service Pass. Bring 2 qts water, snack/lunch, hiking shoes.

Michael Sappingfield 949-633-6993

mikesapp@cox.net

Sharon Kirk 714-376-3197 sl.kirk@sbcglobal.net



Wednesday, May 31, 2017 8:30 AM

0407-Orange County/Sierra Sage Outing

O: Serrano Creek Trail

4.7 mi ow, 590' gain for short hike; 11 mi rt, 690' gain for long hike. Starting at Heritage Park in Lake Forest, we meander on the trail in Serrano Creek Park, cross Trabuco Rd and continue along a shady suburban trail, climbing gently toward Foothill Ranch. The short hike ends before we cross Rancho Pkwy, and participants return to the starting point by public transportation (OCTA Bus #177). The longer hike continues into Whiting Ranch following Live Oak Trail and returning on Serrano Creek Trail all the way back to Trabuco Rd with a stop for lunch (picnic or eatery) in Foothill Ranch en route. Meet 8:30 am at the Heritage Hill parking lot on Serrano Rd, less than a block north off Lake Forest Dr (west of the intersection of Lake Forest Dr & Trabuco Rd). Bring water, snack, lunch (long hike), water, snack, bus fare (.75 seniors, \$2 adults) for the short hike. Walking shoes ok for these hikes. Rain cancels.

Ed Maurer 949-768-0417 balois@cox.net

Sherri Sisson 949-786-7681 sksisson@gmail.com

Wednesday, June 07, 2017 9:00 AM

0407-Orange County/Sierra Sage Outing

O: Seaview Park

5 mi, 400' gain. We climb up the Aliso High Trail above Aliso Creek for great views of the ocean, creek, and South Laguna Beach. Meet 9:00 am at the uphill intersection of Highlands and Ridgeview, Laguna Niguel. From Alicia Pkwy, R on Highlands, R on Ridgeview. Park on Ridgeview. Bring water, snack/lunch, hiking shoes..

Peter R Height 949-713-4569 prheight1@cox.net

Gail Roy 949-854-3820 gfroy@uci.edu

Wednesday, June 14, 2017 7:15 AM

0407-Orange County/Sierra Sage Outing

O: Bighorn Peak

Bighorn Peak (8440'): Join us for a 10 mi, 3600' gain hike in the San Gabriel Mtns along an inviting creek, past private cabins and through beautiful forests to Ice House Saddle and on up to Bighorn Peak, on the 100 peaks list. Meet 7:15 am at the Tustin Rideshare (one block South of I-5 on Redhill in the portion of the parking lot at the Stater Bros strip mall the extends behind the Union 76 gas station).

Bring 2+ liters water, lunch/snacks, hiking boots/lugsoles, poles. *Linda Ledger 949-444-1285 linda.ledger@me.com*
Sylvia Stevenson 949-616-2765 sjstevenson2828@yahoo.com

Saturday, June 17, 2017 8:00 AM

0417-Sierra Sage of SOC Group Outing

O: Beach Hike from Doheny to Trestles

8 miles, no gain, return by bus. Due to favorable low tide, we will be able to walk the entire way on the beach. Meet 8:00 AM at Doheny State Park Road and Dana Harbor Drive, 1 block west of PCH in Dana Point. Park 1 block uphill from meet location. Bring water, hat, sunscreen, walking shoes (may get wet), lunch or \$\$ to buy lunch at pier, \$ for bus.

Michael Sappingfield 949-633-6993 mikesapp@cox.net

Linda Ledger 949-444-1285 linda.ledger@me.com

Wednesday, June 21, 2017 9:00 AM

0407-Orange County/Sierra Sage Outing

O: Buck Gully

5 mi, 100' gain. Explore this sylvan wilderness along a stream with elegant bridges in Corona del Mar. Meet 9:00 am at the corner of Poppy and 5th Av, E of PCH on Poppy in Corona del Mar. Park on street. Bring water, walking shoes, snack.

Sylvia Stevenson 949-616-2765 sjstevenson2828@yahoo.com

Sharon Kirk 714-376-3197 sl.kirk@sbcglobal.net

Saturday, June 24, 2017 8:00 AM

0417-Sierra Sage of SOC Group Outing

O: Holy Jim Falls

A "Mike's Hike". 4 miles round trip, 300' gain. **Suitable for beginners. Families with children 5 yrs and older are welcome.** Join us for a moderately paced hike through a shady canyon to a local waterfall. Meet 8 am at dirt parking area south of bridge where Plano Trabuco/Live Oak Canyon Road crosses Trabuco Creek in Trabuco Canyon. We will carpool in to the trailhead. SUVs or similar vehicles recommended due to unmaintained forest dirt road. FSP or Senior Pass required at trailhead if you drive your own vehicle beyond the meeting place. Rain cancels. Bring water, munchies, hat, mosquito repellent, and sunscreen.

Michael Sappingfield 949-633-6993 mikesapp@cox.net

Sylvia Stevenson 949-616-2765 sjstevenson2828@yahoo.com

Wednesday, June 28, 2017 9:30 AM

0407-Orange County/Sierra Sage Outing

OK: End of Season/Potluck Aliso Wood Canyon Park

5-7 mi, min gain loop hike on the East Aliso Creek Trail. Bring water, hiking shoes for the hike. For the potluck, bring a dish for 4-6 to share, plus your own plate, cup, utensils, drink. Meet 9:30 am at the Aliso Wood parking lot (from

Alicia Pkwy, S to just past Aliso Creek Rd, turn R into Awma Rd and the parking lot. \$3 parking.

Peter R Height 949-713-4569 prheight1@cox.net
 Sherri Sisson 949-786-7681 sksisson@gmail.com

Sunday, July 09, 2017 7:00 AM (Time Tentative)

0417-Sierra Sage of SOC Group Outing

O: San Jacinto Wilderness Loops

Enjoy the cool 75 degree temperatures in mid-summer, walking through the pine forests on the upper slopes of Mt. San Jacinto. Two hikes from the top of the Palm Spring Tramway (8420') to Round Valley (9060') will be offered concurrently. Both hikes include the Round Valley loop. Longer route (8 miles round trip, 1750' gain) will include a hike to Wellmans Divide (9720') and back. Shorter route will be a more casual pace (6 miles round trip, 950' gain). Meet 7:00 AM at the south entrance of parking garage of the Irvine Transportation Center (Irvine Train Station, Ada & Barranca), or 9:00 AM at the tramway entrance. Bring money for tramway fee, lunch, water, hat, light jacket, sunglasses, sunscreen, lugsole boots. Rain cancels.

Michael Sappingfield 949-633-6993 mikesapp@cox.net

John Kaiser 714-968-4677 jkai39@gmail.com

Russ Brown 949-481-5295 russbrown3@cox.net



RIDESHARE MEETING POINTS

S Orange Co...Ortega Plaza parking lot SE corner, Ortega Hwy/Rancho Viejo, San Juan Capistrano

Tustin ... Redhill Ave on N side (Fwy side) of Stater Bros Market just SW of Redhill Ave exit from Santa Ana Fwy

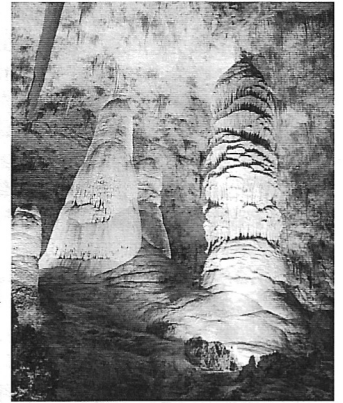


Angeles Chapter and Sierra Sage Group Present Southern New Mexico October 14-21, 2017

Leaders: Mike & Patty Sappingfield

*This trip is full, however, there are spaces on the
 Wait list in case of cancellations.*

Join us for this fascinating 8 days, 7 nights, exploration of Southern New Mexico. Highlights are **Carlsbad Caverns and Guadalupe Mountains National Parks, White Sands, and Prehistoric Trackways National Monuments and Chamizal National Memorial**. In between, we will visit the plaza of old **Mesilla**, and the stomping grounds of **Billy the Kid** in the historic town of **Lincoln**, and modern day museums such as the one about **UFOs in Roswell**, the **White Sands Missile Range Museum**, and the **New Mexico Museum of Space History**. Towns and Cities visited include **El Paso, Texas, and Las Cruces, Alamogordo, Roswell, Carlsbad, in New Mexico**.



Trip includes transportation via a 56 passenger Motor Coach from El Paso, to all stops, and returning to El Paso at the end of the trip. **All Breakfasts, and up to two picnic lunches and Lodging for 2 people per room for 7 nights in middle range hotels such as Comfort Inns and similar places are included. It also includes all admissions to all museums, parks, and the planned tours in Carlsbad Caverns.** Other lunches, all dinners, air or other transportation from home to El Paso are not included.

Trip cost is \$1295 per person for Sierra Club Members (\$1395 for non-members.) A \$500 deposit per person will reserve your spot with final payment of the remainder due no later than July 1, 2017. A small number of rooms will be available for those who wish to have a private room and are willing to pay a single supplement of \$500.

To apply, request the application package from Mike & Patty Sappingfield at mikesapp@cox.net or via mail at P. O. Box 524, Lake Forest, CA 92609. **Send the completed application forms along with the \$500 (+250 deposit if you wish a private room for one) to "Sierra Sage of South Orange County, P. O. Box 524, Lake Forest, CA 92609.**

DIRECTORY OF SIERRA SAGE OFFICERS

Title	Name	Phone	Email
Chair	Mike Sappingfield*	949-768-3610	mikesapp@cox.net
Vice Chair	Duana Miller	949-831-0890	duana103@hotmail.com
Secretary	John Kaiser*	714-968-4677	jkai39@gmail.com
Treasurer	Patty Sappingfield*	949-768-3610	solanese@cox.net
Outings Co-Chair	Todd Clark	714-803-0195	clarkta@hotmail.com
Outings Co-Chair	Sylvie Coté	949-547-2998	mlsylvie@hotmail.com
Co-Membership Ch	Linda Ledger*	949-444-1285	linda.ledger@me.com
Co-Membership Ch	Rich Maxey*	949-310-5134	richmaxey@yahoo.com
Communications	Mike Sappingfield*	949-768-3610	mikesapp@cox.net
Webmaster	Bob Hansen		awildtrout@gmail.com
Circulation Chair	Patty Sappingfield*	949-768-3610	solanese@cox.net
Political Chair	Sharon Koch*	949-717-7745	slkoch@ix.netcom.com
Chapter Rep	Vanessa Glotzbach	949-585-3646	vglotzbach@gmail.com
Alt Chap Rep	Mike Sappingfield	949-768-3610	mikesapp@cox.net
Program Chair	Sylvia Stevenson*	949-616-2765	sjstevenson2828@yahoo.com
Facebook Manager	Vanessa Glotzbach	949-585-3646	vglotzbach@gmail.com
Media Contact	Rich Maxey*	949-310-5134	richmaxey@yahoo.com
Aliso Hobo Ridge TF	Penny Elia		greenp1@cox.net
Santa Ana Mtns TF	John Kaiser*	714-968-4677	jkai39@gmail.com
San Onofre TF	Marni Magda		marnimagda@gmail.com

* Denotes voting member of the Executive Committee

SIERRA SAGE MEETINGS.

- Executive Committee meetings are open to all members of the Sierra Club who reside in South Orange County. Meetings are normally on the 2nd Thursday of each month. Contact Mike Sappingfield at mikesapp@cox.net for date, time and directions.
- Preserve the Coastal areas of Orange County? Contact Penny Elia at greenp1@cox.net
- Interested in electing environmentally supportive politicians into local offices? Contact Sharon Koch at slkoch@ix.netcom.com
- Want to keep the Santa Ana Mountains wild? Or even want to help maintain the trails in the San Mateo Wilderness Area? Contact John Kaiser at jkai39@gmail.com



Subscription Information Sierra Sage Newsletter

Subscription Rates;	1 Year	\$ 9.00
	2 Years	\$15.00

Please mail your check to:

Sierra Sage
P. O. Box 524
Lake Forest,, CA 92609

Note: This is a new
Address

Sierra Sage is scheduled for delivery on Jan 1, March 1, May 1, July 1, Sept 1, and November 1 of each year. Please note that submission deadline is one month prior to publication.

Electronic copies are sent via email and are free. Just send an email to mikesapp@cox.net and tell us you want the emailed Newsletter

INTERNET ADDRESSES:

Angeles Chapter: www.angeles.sierraclub.org

Sierra Sage: www.sierrasage.org



**SIERRA
CLUB**

FOUNDED 1892

*Sierra Sage of South Orange County
P. O. Box 524
Lake Forest CA 92609*

First Class Mail

Subscribers.....Check the
"Last Issue" date on your
label and renew early.
Don't forget to give us your
new address if you're mov-
ing so you'll get your Sage
at your new place on time!

Website:

HIKE OF THE MONTH

Saturday, June 24, 2017 8:00 AM
0417-Sierra Sage of SOC Group Outing
O: Holy Jim Falls

A "Mike's Hike". 4 miles round trip, 300' gain. **Suitable for beginners. Families with children 5 yrs and older are welcome.** Join us for a moderately paced hike through a shady canyon to a local waterfall. Meet 8 am at dirt parking area south of bridge where Plano Trabuco/Live Oak Canyon Road crosses Trabuco Creek in Trabuco Canyon. We will carpool in to the trailhead. SUVs or similar vehicles recommended due to unmaintained forest dirt road. FSP or Senior Pass required at trailhead if you drive your own vehicle beyond the meeting place. Rain cancels. Bring water, munchies, hat, mosquito repellent, and sunscreen.
Michael Sappingfield 949-633-6993
mikesapp@cox.net
Sylvia Stevenson 949-616-2765 sjstevenson2828@yahoo.com

Join the Sierra Club

Yes, I want to join! I want to help safeguard our nation's precious natural heritage. My check is enclosed.

Name _____

Address _____

City, State _____ Zip _____

F94Q -0417

Membership Categories (circle one)

	Individual	Joint
Introductory	\$15	
Standard	\$39	\$49
Supporting	\$75	\$100
Contributing	\$150	\$175
Life	\$1000	\$1250
Senior	\$25	\$35
Student	\$25	\$35
Limited Income	\$25	\$35

Send Check to Sierra Club, P. O. Box 421041, Palm Coast, FL 32142-1041 Membership not tax deductible