

Sierra Sage



Volume 20, Issue 3 Published Bimonthly by the Sierra Sage of South Orange County Group of the Sierra Club
May 1 through July 1, 2012

STARR RANCH BBQ

Its time to buy your tickets for the 13th Annual Starr Ranch BBQ — May 20th, 1-5 pm

We will be enjoying the bubbling streams, local wildlife, wild flowers, singing birds in one of the prettiest locales in Orange County. The site of the headquarters of a long time cattle ranch, the Starr Ranch has been an Audubon Conservancy and Research Center for over 20 years.

The folks at Starr Ranch have invited us back again to soak up the atmosphere and bask in the beautiful countryside as well as enjoy the good food, good music, bird walks, easy hikes and great conversation.

To come, just send a check for \$30 per ticket, (\$15 for children under 12) to: **Starr Ranch BBQ, c/o Patty Sappingfield, 26352 Via Juanita, Mission Viejo, California.** Please include a Self Addressed Stamped Envelope (SASE) to facilitate returning the ticket and map/gate pass to you. For information, call Patty at 949-768-3610



May Meeting:

We will discuss environmental issues and conservation issues current to Orange County Residents as well as discuss the various hikes and other activities being presented in Orange County in the near future.

PROGRAM: Riding the Rails —Have you ever wondered what it would be like to get to interesting places, including hiking trailheads without a car? What if you could ride public transit---trains, light rail/subways, and buses--- to trails, museums, historical venues and unusual places in LA and OC.

Well, you can. Chuck Buck has been doing this for the past few years and will show you how--what---and where. Most of the trips are short, inexpensive and comfortable. Most start from one of the many Metrolink stations in OC.

WHERE: Norman Murray Community and Senior Center
24932 Veterans Way, Mission Viejo, CA

WHEN: 7:00 PM, January 24, 2012

ROOM: Juniper Room
Refreshments Provided.

Directions to the Murray Center on page 2

LEAPS: Back to the Future?

Last July, the Director of the Office of Energy Projects dismissed a license application for the pumped storage hydro project that is known as LEAPS (Lake Elsinore Advanced Pump Storage). The dismissal was based on the fact that the two applicants, The Nevada Hydro Corporation (TNHC) and the Elsinore Valley Municipal Water District (EVMWD), did not agree on how to proceed with the project. TNHC appealed the dismissal to the full Federal Energy Regulatory Commission (FERC). On November 17, 2011, FERC denied the appeal and refused to reconsider, a decision greatly applauded by the environmental community and many residents in Riverside County.

However TNHC, now acting as a sole applicant, has filed an application for a preliminary license for the same project. FERC has accepted the application but not acted on it – TNHC will have to provide more information for FERC to take action. At a board meeting, EVMWD discussed filing their own application, but did not take any action when board members noted there was no community support for the project among their constituents. TNHC's new application has turned back the clock by eleven years to the time when this project was first proposed with Enron as one of the applicants. The Santa Ana Mountain Task Force (SAMTF) has filed as an Intervenor in this new proceeding. No immediate action on the application is expected.

In a parallel effort, TNHC applied to the California Public Utilities Commission (CPUC) for a "Finding of Public Necessity and Convenience" for the 500 kV power line that was part of the original LEAPS project. The power line could be built as a separate project and represents a considerable threat in the Cleveland National Forest and surrounding communities. When it became apparent that TNHC's application was incomplete, they requested an extension of time; however the Administrative Law Judge refused and requested all parties involved in the hearing to submit written comments on whether the application should be dismissed. SAMTF, on behalf of the Sierra Club, and the Center for Biological Diversity each have submitted comments requesting that the judge dismiss the application with prejudice, an action that would prevent TNHC from further attempts. Currently, we are waiting for the decision of the judge.

Although decisions continually go against TNHC, they have been persistent in pursuing this project and it has come back from 'near death' several times. A favorable ruling by CPUC would give TNHC considerable power, including the right of eminent domain, in pushing forward with the power line and could also lead to getting a license for the entire pumped storage project from FERC. SAMTF will remain diligent in monitoring and opposing the project.

May 22 Monthly Meeting Ride the Rails

(continued from Page 1)

DIRECTIONS:

Northbound on I-5, exit at La Paz, turn right onto La Paz, cross Marguerite Parkway and proceed over Oso Creek. Turn left onto Veterans Way and drive to the Murray Center Parking lot.

Southbound on I-5, exit at La Paz, turn left onto La Paz, cross Marguerite Parkway and Oso Creek. Turn left onto Veterans Way and drive to the Murray Center Parking Lot

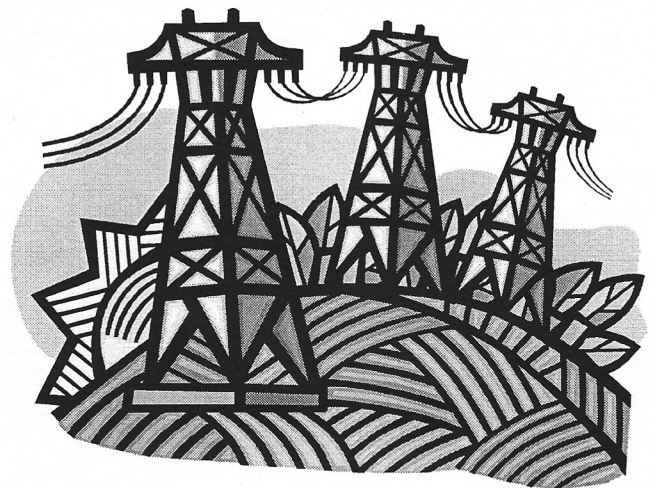
UPDATE!!!!

LEAPS AND ITS TRANSMISSION LINE

Gene Frick

The major news is that Judge Minkin at CPUC has issued a draft decision on The Nevada Hydro Co. (TNHC) application to build the TE/VS 500 kV transmission line through the forest. The draft decision cancels TNHC's application due to the fact that it is now not complete because their backer dumped them and because the Fallbrook Land Conservancy (FLC) is no longer willing to allow their land to be used for a substation site.

You may recall that we, CBD and other environmentalists put pressure on FLC when we learned that they were in negotiations with TNHC to use a conservation reserve as a substation site. Once all of the impacts were explained to the FLC board they did the right thing and told TNHC - "not here". Without a defined substation site it is not possible to evaluate the application nor to prepare an adequate EIR.



Mark your calendars! Vote on June 5.

This year it is more important than ever to vote in the primary election. This might seem like a strange statement when the candidates for President in both major parties have pretty much been determined. But did you know there are actually two primary elections scheduled in California on June 5?

The first is the Presidential Primary to produce "party-nominated" candidates for President and County Central Committees who will appear on the November general election ballot by party. This is the type of primary Californians are used to.

The second is the statewide Top Two Primary Election for congressional and state elective offices. This primary features "Voter-nominated" candidates. Only the top two vote-getters in the primary election for these offices will move on to the general election in November. All candidates running for an office appear on one ballot regardless of their party preference. All voters may vote for any candidate on the list. Even if one candidate receives more than 50% of the vote, the top two candidates receiving votes will advance to the general election.

Some important points about the Top Two Primary Election:

- Voters will not see a "straight party ticket" on the ballot, but rather a list of names for the different contests with each candidate's party preference indicated. However, a candidate for a voter-nominated office may choose not to have his or her party preference indicated on the ballot.
- It is possible for two voter-nominated candidates with the same party affiliation to appear on the November ballot. Although votes may be cast for write-in candidates in the Top Two primary election, no write-in votes are allowed in the November general election for the Top Two contests.

June 5 will also feature the debut of the new state district maps as a result of the 2010 Census. With the new state district maps drawn by the Citizens Redistricting Commission for Congressional, state Senate, Assembly and Board of Equalization districts, many voters will find themselves in a new electoral geography with new district boundaries for the upcoming election cycle. Some voters in the state will see unfamiliar names listed on their ballot as incumbents; for some there will be no incumbents running; others will see multiple incumbents listed on their ballots for a single contest.

Thanks to the League of Women Voters for a clear explanation of the changes. You can locate your district: <http://electionmapping.ocgov.com/OCdistrictmap2/MapDistrict.aspx>.

For frequently asked questions about the primary elections in California, you can go to this link on the Secretary of State's website: <http://www.sos.ca.gov/elections/2012-elections/june-primary/faqs-primary-2012.htm>. May 21, 2012 is the last day to register to vote

SAN ONOFRE NUCLEAR GENERATING STATION (SONGS) — HAS IT REACHED THE END OF ITS TIME?

Last week, my wife and I attended a public hearing on the San Onofre Nuclear Generating Station (SONGS) held by the Irvine City Council. At the end of the hearing, the City Council voted 5-0 to send a letter to the Nuclear Regulatory Commission raising many concerns about the current state of the plant and asking for a review of its safety and appropriateness for resuming operations. They also asked to expand the 10 mile Emergency Evacuation Zone to 50 miles.

By way of background, Reactor #1 has been shut down for several years and decommissioned as an operating reactor. Reactor #2 and #3 have currently been shut down since January 31, 2012 due to leaks in the steam tubes in the reactor. It may be many months, if ever before the reactors are brought back on line. The Edison Company Spokesperson at the Hearing stated that :Edison will not start either reactor until we are sure that the problems have been resolved and it is safe for the residents in the area.

Testimony by two experts in the field of Nuclear Power Generation stated that there were several significant problems with the reactions. First, some years ago, Edison expanded the number of steam tubes in the Reactor from the design plan of 650 tubes to around 1000 tubes. That expansion, they testified, has caused an internal vibration and rubbing between the concrete wall and the tubes, resulting in failure of the tubes.,

Second, they advised us that the electrical wiring was done with flammable insulation. In a fire, the insulation would melt causing shorts and a failure of the control system. They had a fire at SONGS just a couple of weeks ago, and that resulted in evacuating a nearby elementary school before it was brought under control.

Third, they have no plans or ability to dispose of the nuclear waste safely. As a result, all of the waste generated by the plant is currently stored on the facility in water containers. These type of waste storage facilities were breached at Fukushima last year after the earthquake and Tsunami. Please note that we had a 3.9 earthquake just a few miles from SONGS.

For additional information and/or to volunteer to help educate the public, Call Gary Headrick at 949-218-4051 or via email at :garyheadrick@gmail.com

Mark your calendars! Vote on June 5.

This year it is more important than ever to vote in the primary election. This might seem like a strange statement when the candidates for President in both major parties have pretty much been determined. But did you know there are actually two primary elections scheduled in California on June 5?

The first is the Presidential Primary to produce "party-nominated" candidates for President and County Central Committees who will appear on the November general election ballot by party. This is the type of primary Californians are used to.

The second is the statewide Top Two Primary Election for congressional and state elective offices. This primary features "Voter-nominated" candidates. Only the top two vote-getters in the primary election for these offices will move on to the general election in November. All candidates running for an office appear on one ballot regardless of their party preference. All voters may vote for any candidate on the list. Even if one candidate receives more than 50% of the vote, the top two candidates receiving votes will advance to the general election.

Some important points about the Top Two Primary Election:

- Voters will not see a "straight party ticket" on the ballot, but rather a list of names for the different contests with each candidate's party preference indicated. However, a candidate for a voter-nominated office may choose not to have his or her party preference indicated on the ballot.
- It is possible for two voter-nominated candidates with the same party affiliation to appear on the November ballot. Although votes may be cast for write-in candidates in the Top Two primary election, no write-in votes are allowed in the November general election for the Top Two contests.

June 5 will also feature the debut of the new state district maps as a result of the 2010 Census. With the new state district maps drawn by the Citizens Redistricting Commission for Congressional, state Senate, Assembly and Board of Equalization districts, many voters will find themselves in a new electoral geography with new district boundaries for the upcoming election cycle. Some voters in the state will see unfamiliar names listed on their ballot as incumbents; for some there will be no incumbents running; others will see multiple incumbents listed on their ballots for a single contest.

Thanks to the League of Women Voters for a clear explanation of the changes. You can locate your district: <http://electionmapping.ocgov.com/OCdistrictmap2/MapDistrict.aspx>.

For frequently asked questions about the primary elections in California, you can go to this link on the Secretary of State's website: <http://www.sos.ca.gov/elections/2012-elections/june-primary/faqs-primary-2012.htm>. May 21, 2012 is the last day to register to vote

SAN ONOFRE NUCLEAR GENERATING STATION (SONGS) — HAS IT REACHED THE END OF ITS TIME?

Last week, my wife and I attended a public hearing on the San Onofre Nuclear Generating Station (SONGS) held by the Irvine City Council. At the end of the hearing, the City Council voted 5-0 to send a letter to the Nuclear Regulatory Commission raising many concerns about the current state of the plant and asking for a review of its safety and appropriateness for resuming operations. They also asked to expand the 10 mile Emergency Evacuation Zone to 50 miles.

By way of background, Reactor #1 has been shut down for several years and decommissioned as an operating reactor. Reactor #2 and #3 have currently been shut down since January 31, 2012 due to leaks in the steam tubes in the reactor. It may be many months, if ever before the reactors are brought back on line. The Edison Company Spokesperson at the Hearing stated that Edison will not start either reactor until we are sure that the problems have been resolved and it is safe for the residents in the area.

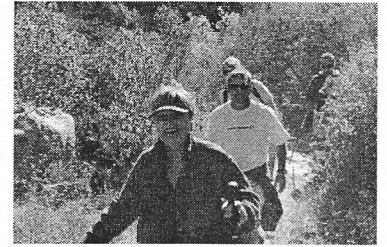
Testimony by two experts in the field of Nuclear Power Generation stated that there were several significant problems with the reactions. First, some years ago, Edison expanded the number of steam tubes in the Reactor from the design plan of 650 tubes to around 1000 tubes. That expansion, they testified, has caused an internal vibration and rubbing between the concrete wall and the tubes, resulting in failure of the tubes.

Second, they advised us that the electrical wiring was done with flammable insulation. In a fire, the insulation would melt causing shorts and a failure of the control system. They had a fire at SONGS just a couple of weeks ago, and that resulted in evacuating a nearby elementary school before it was brought under control.

Third, they have no plans or ability to dispose of the nuclear waste safely. As a result, all of the waste generated by the plant is currently stored on the facility in water containers. These type of waste storage facilities were breached at Fukushima last year after the earthquake and Tsunami. Please note that we had a 3.9 earthquake just a few miles from SONGS.

For additional information and/or to volunteer to help educate the public, Call Gary Headrick at 949-218-4051 or via email at garyheadrick@gmail.com

Outings



May 2 Wed Orange County
O: Cave Rock: 5 mi, minimal gain. We take a leisurely hike along Aliso Creek to the Cave Rock loop and return. Meet 9:00 am at the Aliso-Wood Park entrance, S on Alicia Pkwy just past Aliso Creek Rd to the entrance on the R. \$3 parking. Bring water, snack/lunch, lugsoles or sturdy shoes. Newcomers welcome. Ldr: Pita Landesman. Asst: Dea Denton.

May 05 Sat Sierra Sage, Santa Ana Mtns TF
O: Sitton Peak (3273'): Strenuous 10 mi, 2100' gain, moderately paced. Hike from the Candy Store on the Bear Cyn Trail and the Sitton Pk Trail to our lunch spot atop the peak with panoramic views. Meet 8 am South OC Rideshare. Bring lunch, 2 qts water, lugsoles. Rain or critical fire level cancels. Ldr: John Kaiser. Asst: Michael Metcalf.

May 06 Sun Sierra Sage, Easy Hikers, Little Hikers
O: Donna and Richard O'Neill Conservancy: 2 mi, 25' gain. Easy Nature Loop among the wildflowers. Meet 8:30 at the South OC Rideshare. \$10 per person (children \$5) contribution to aid the work of the Conservancy. Conservancy members free. Rain cancels. Ldr: Duana Miller. Asst: Patty Sappingfield

May 9 Wed Orange County
O: Top-of-the-World: 6 mi, 600' gain. A fun trek up the West Ridge of Laguna Beach to the lovely Alta Laguna Park at the top. Great views and a pleasant resting spot. Meet 9:00 am at Canyon View Park, Aliso Viejo. From El Toro Rd, S on Moulton to Glenview, R and uphill over the toll road to Canyon Vistas Dr, R to end. Park on Street. Bring water, lunch, lugsoles. Rain, 3 days after rain, cancels. Ldr: Sid Alpert. Asst:

May 16 Wed Orange County
O: Canyon to Coast via Signal Hill: 8 mi, 1500' cum gain, 1650 loss. Expansive views, perhaps some late flowers, and opportunity to ponder the interface between wilderness and civilization. Return to starting point by bus. Meet 8:30 am Laguna Coast Wilderness Willow entrance on Laguna Cyn Rd (NOT Nix). From I-5 take El Toro Rd W to the "T" at Laguna Cyn Rd, turn L, then shortly R into large parking lot. Bring 2 qts water, lunch, lugsoles, \$3 for parking (or credit card), bus fare x 2 (\$.60 seniors, \$1.50 regular). Must be able to keep up with group. Rain cancels. Ldrs: Ed & Helen Maurer.

May 19 Sat Sierra Sage of S Orange Co
O: Caspers Park, East Flat Trail: 6 mi rt 600' gain. Begin at Ortega Flats and traverse East Flats trail, with open grasslands and beautiful views. Ascend Quail Run to East Ridge, with panorama views of the National Forest. Return via Oso and Bell Canyon trails amongst ancient oak groves. Peak wildflower season. Meet 8:30 am at South OC Rideshare. Bring water, lunch, lugsoles. Rain cancels. Ldr: Michael Metcalf. Asst: Mike Sappingfield.

May 20 Sun Sierra Sage of S Orange Co,
O: Starr Ranch Barbeque Fundraiser: All Sierra Club members and friends are invited to the annual Sierra Sage Starr Ranch Barbecue to enjoy this authentic bit of Old California ranch life with a "genuine country barbecue". Prior to the barbecue we will have birding walks and hikes within this beautiful rustic 4,000 acre Audubon Sanctuary. A portion of the proceeds will go to the Sanctuary and the remainder to other conservation projects supported by Sierra Sage. See the May Southern Sierran for full details. Co-Leaders: Russ Brown, Don Clarence, Bob Hansen, Michael Metcalf, Duana Miller, Mike Sappingfield, Patty Sappingfield, Sylvia Stevenson, Chet Stipe,

May 23 Wed Orange Cty, Sierra Sage, Easy Hikers
O: Mesa Loop/Juaneno Trail: 5 mi, 200' gain. A leisurely paced "Mike's Hike" into the east part of Casper's Park. Bring a friend and join us in exploring an area of the park which has long been closed to hikers. There should be lots of spring flowers. Meet 8:30 am at the South Orange County rideshare point. Bring water, munchies, lugsoles. Heavy rain cancels. Ldr: Mike Sappingfield. Asst: Andy Beall

May 26 Sat Sierra Sage of S Orange Co
O: Oso Creek Trail: 6.5 mi rt, 400' gain. Hike paved trails along the creek and up thru the Jeronimo Open Space, then dirt trail to Nacimiento Ridge overlooking Trabuco Cyn. Meet 8:45 am (from I-5, E on La Paz, just past Marguerite Pkwy turn L on Thomas R. Potocki Conf Ctr Rd, to lower parking lot). Bring water, hat, comfortable shoes. Ldr: Chet Stipe. Asst: Don Clarence.

May 30 Wed Orange County
O: Doheny to Trestles Beach Walk: 9 mi, 100' gain at end. Enjoy the sand and surf walking along the beach with a short section on the San Clemente Beach Trail to the Trestles, then up the path to Carl's to catch the bus return. Meet 8:30 am at the entrance to Doheny State Beach. From PCH in Dana Point, S to Del Obispo/ Harbor inter-

section, R on Harbor Dr, immediate R up Street of the Park Lantern opposite Doheny State Beach Park entrance, to a small parking lot on the R. Bring 2 qts water, lunch, tennis ok. Ldr: Garry McCoppin. Asst: Pete Height

June 6 Wed Orange County
O: Salt Creek Corridor to Dana Point: 6 mi, 200' gain. Amble down Salt Creek on the bike trail to the beach, then up to Dana Point Headlands on the new trail, through a residential area to descend to Dana Point Harbor and optional lunch. Bus return. Bring water, snack if desired, bus fare. Meet 9:00 am at Chapparosa Park, Laguna Niguel. From Crown Valley Pkwy, S on Golden Lantern, R on Chapparosa to Park at end. Ldr: Garry McCoppin. Asst: Judy Mulry

Jun 09 Sat Sierra Singles, Sierra Sage Easy Hikers
O: Antiques & Lunch @ Circle in Orange: Spend part of the day in one of the premier antiquing centers in Orange Co. We'll leisurely browse the many consignment shops and antique stores on the side streets that radiate in several directions from our meeting point. Also visit the Army/ Navy Thrift Store just for fun! Enjoy lunch afterwards to share bargain stories- many interesting restaurants nearby. Meet 10 am by the fountain at the "Circle", Chapman & Glassell, Orange. Wear comfortable shoes, sun protection; bring water and money for lunch. Rain cancels. Ldrs: Mary Morales and Patty Sappingfield.

Jun 10 Sun Sierra Sage of S Orange Co
O: Bear Canyon Loop. 6.5 mi, 1300 gain. Hike from the candy store on Ortega hwy up to the Bear Ridge trail to Four Corners, then return via Bear Canyon trail. Enjoy the spring wildflowers among the chaparral on a high plateau in the Santa Ana Mtns. Meet 8 am at the South OC Rideshare (Ortega Plaza at Rancho Viejo Rd & Ortega Hwy, 1 blk east of I-5). We will carpool to the Candy Store Trailhead Parking Area. Bring 2 qts water, lunch, hat, and sunscreen. Cameras optional. FSP required if parking at trailhead. Ldrs: Mike Sappingfield, Garry McCoppin

June 13 Wed Orange County
O: Arroyo Trabuco: 9 mi, 300' gain, 700' loss. Leisurely walk along Trabuco Creek all the way from Rancho Santa Margarita to Crown Valley Pkwy. Enjoy wild riparian areas with fine meadows, majestic stands of sycamores, and stream crossings. A variety of eating establishments are located at trail's end. Return to starting point by #82 bus. Meet 8:30 am at a back entrance of O'Neill Park on El Camino Montana in Rancho Santa Margarita. From Santa Margarita Pkwy go L on Avenida de las Flores and immediate L again on Via con Dios which curves R twice and becomes El Camino Montana. Bring 2 qts water, walking/wading shoes, bus fare (\$.60 seniors, \$1.50 regular). Rain cancels. Ldrs: Ed & Helen Maurer.

Jun 16 Sat Sierra Sage of S Orange CoO: Thunder (8587'), Telegraph (8985'): 6 mi rt, 1900' gain, moderate pace. We will ride the chair to Baldy Notch, then hike to two of the 3T's. Meet 7:30 am at Tustin Rideshare (Redhill Ave on N side of Stater Bros just one block SW of Redhill exit from I-5). Bring 2 qts water, lunch, lugsoles, \$ for chairlift. Ldr: Garry McCoppin. Asst: John Kaiser.

June 20 Wed Orange County
O: Oso Creek Trail: 5 mi, 400' gain. Hike paved trails along the creek and up thru the Jeronimo Open Space, then dirt trail to Naciente Ridge overlooking Trabuco Cyn. Meet 9:00 am (from I-5, E on La Paz, just past Marguerite Pkwy, turn L on Potocki Conf Ctr Rd to lower parking lot). Bring water, snack/lunch, comfortable shoes. Newcomers welcome. Ldr: Pita Landesman. Asst: Bernie Lipman.

23 Jun Sat Sierra Sage of , Easy Hikers
O: Dana Point Headlands: 3 mi loop, 100' gain, easy-paced. Visit all the new trails in this chaparral preserve, and enjoy spectacular vistas. Meet 8:45 am, north end of Selva Rd parking lot, on beach side of PCH in Dana Point. Bring water, hat, comfortable shoes. Rain cancels. Ldr: Chet Stipe. Asst: Sylvia Stevenson.

Jun 24 Sun Sierra Sage of S Orange Co
O: Doheny Park to San Clemente or Trestles: 4 mi, no gain, to the pier, or 8 mi to Trestles. Return by bus from either place. Enjoy the beach scenes and new trail along the railroad. Meet 9 am at Doheny State Park Road and Dana Harbor Drive, 1 block w of PCH in Dana Point. Park 1 block uphill from meet location. Bring water, hat, sunscreen, hiking shoes lunch (or \$ to buy lunch at pier). Ldrs: Sylvie Côté. Todd Clark.

June 27 Wed Orange County
O: End-of-Season Hike/Potluck: 5 mi, min. gain on a loop hike on the East Aliso Creek Trail. Bring water, lugsoles for the hike. For the potluck, bring a dish for 4-6 to share, plus your own plate, cup and utensils. Meet 9:30 am at the Aliso Wood parking lot (from Alicia Pkwy, S to just past AlisoCreek Rd, turn R into Awma Rd and the parking lot. \$3 parking. Ldr: Pita Landesman. Asst: Dea Denton.

Jul 07 SAT SIERRA SAGE OF S ORANGE CO
O: MT BALDY (10,064') WITH A LIFT: 7 mi, 2500' gain/loss. We shall ride the chair lift to Baldy Notch, then hike 3.5 mi via Devils Backbone to the peak for lunch. Descend same route. Meet 7:00 am at NOC rideshare pt or 8:15 am at chair lift parking lot. Bring 3 qts water, lunch, lugsoles, \$ for chairlift. Ldr: John Kaiser. Asst: Sharon Kirk.

JUL 08 SUN SIERRA SAGE OF S ORANGE CO
O: COLINAS RIDGE: 5.5 mi rt, 400' gain. Short steep trail sections with good views, as we hike North along Colinas Ridge bordering Laguna Niguel and San Juan Capistrano. Meet 9 am at Dog Park next to Fire Station on Golden Lantern St in Laguna Niguel. Bring water, lugsoles, hat. Rain cancels. Ldr: Chet Stipe. Asst: Duana Miller.

JUL 14 SAT SIERRA SAGE

O: SAN JACINTO LOOP HIKES: 6 mi rt, 950' gain and 8 mi rt, 1750' gain. Two hikes from the top of the Palm Springs tramway (9000') to Round Valley via Long Valley trail outbound and the ridge trail back. Longer route will include a hike to Wellman Divide. Enjoy the cool 75 degree temp in mid summer, walking through the pine forests along cool mountain streams on the upper slopes of Mt. San Jacinto. Meet 7 am at the south entrance of parking garage of the Irvine Transportation Center (Irvine train station, Ada & Barranca) or 9 am at tramway entrance. Bring \$\$ for tramway fee (see Mike Sappingfield at tramway for discount card), lunch, water, lugssoles. Rain cancels. Co-Ldrs: John Kaiser, Mike Sappingfield, Todd Clark, Sylvie Côté.

OCSS CONDITIONING HIKES - EVERY TUES/THUR @ 6:30 PM

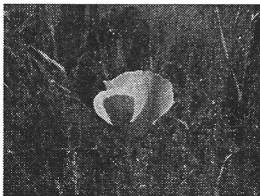
O: IRVINE TURTLE ROCK. Easy/Moderate/Tiger paced hikes, 4-7 mi rt on hilly trails. Bring Water, light hiking boots. 405 Fwy, exit S at University/Jeffery, L on Ridgeline, L on Turtle Rock, pass Sunnyhill, L into parking lot of Turtle Rock Community Park, Ldrs, John LaRue, Markey and Robert Neighbors, Kim Gunderman, Ron Campbell, Gigi Logan, and others.

RIDESHARE MEETING POINTS

N Orange Co... Park-N-Ride, E side of Tustin Av just S of Lincoln Av, Orange.

S Orange Co... Ortega Plaza parking lot SE corner, Ortega Hwy/Rancho Viejo, San Juan Capistrano, in front of Ball Park Pizza

Tustin ... Redhill Ave on N side (Fwy side) of Stater Bros Market just SW of Redhill Ave exit from Santa Ana Fwy



HIKE LEADERS

Alpert, Joyce & Sid	949-380-0420	Lipman, Bernie	714-879-7593
Barnes, Patricia	714-827-9744	Maurer, Helen & Ed	949-768-0417
Beall, Andy	714-633-5563	Maynard, Joe	562-981-9111
Bean, Denny	714-525-3214	McCoppin, Garry	714-269-5078
Bower, Necia	949-859-3773	Metcalf, Mike	949-492-6277
Brown, Russ	949 481-5295	Miller, Duana	949-831-0890
Clarence, Don	949-709-2967	Mulry, Judy	949-588-1347
Clark, Todd	714-803-0195	Rau, Gabriele	949-559-9212
Cote, Sylvie	949-547-2998	Reed, Fred	714-325-2710
Creighton, Barbara	714-960-3949	Roy, Gail	949-981-8523
Denton, Dea	949-581-8396	Sappingfield, Mike	949-768-3610
Doerring, Ross	949-244-3415	Sappingfield, Patty	949-768-3610
Len Gardner	lgardner@fea.net	Schlegel, Ed	949-212-5655
Garner, Julie	714-335-1579	Schrantz, Ron&JoAnn	714-995-8240
Hansen, Bob	949-586-4928	Siebert, Robert	714-997-0190
Johnson, Eric	714-524-7763	Specht, Donna	714-963-6345
Jones, Ron & Leora	714-773-5570	Stipe, Chet	949-363-1142
Kaiser, John	714-968-4677	Stevenson, Sylvia	949-487-2660
Kirk, Sharon	714-545-1149	Taylor, Dave	949-770-9409
Landesman, Pita	949-425-8966		

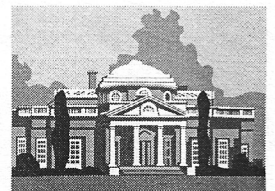
ADVANCE NOTICE; 2013 TRAVEL ADVENTURES

- Feb 2-9 **Florida Keys and Everglades**
8 days, 7 nights exploring the Florida keys, coral reefs and the Everglades
- April 21-27 **Arches and Canyonlands**
8 days, 7 nights exploring the many Arches and the majestic Canyons of Southeastern Utah.
- August **Olympic National Park and Victoria**
8 days, 7 nights wandering through the ridges, beaches and rainforests of Olympic Park and finishing with a visit to the Canadian City of Victoria.
- October **Albuquerque Balloon Fiesta, etc.**
8 days and 7 nights in Northern New Mexico with stops in Santa Fe, Taos, Chaco Canyon, and more.

For more information on any of these travel adventures, contact Mike Sappingfield at 949-768-3610 or at mikesapp@cox.net

ANGELES CHAPTER, SIERRA SINGLES, SIERRA SAGE September 23 to September 30, 2012

O: HISTORICAL VIRGINIA AND NEARBY AREAS. If you always wanted to see some of the most famous historical spots in and around the State of Virginia, this is the trip for you. We will fly into Washington Dulles Airport, then van to the restored Revolutionary Era Town of **Williamsburg; Jamestown**, the site of the first English settlement in America; and **Yorktown Battlefield** where George Washington won the climatic battle of the Revolutionary War. From there, we will tour such historical sites as **Appomattox Court House** where Lee surrendered his army to U S Grant; to **Monticello**, home of Thomas Jefferson; to the **Shenandoah Valley**, Luray Caverns, the Skyline Drive and the **Appalachian Trail; Harpers Ferry**, site of John Browns revolt; then explore **Gettysburg Battlefield**, the turning point of the Civil War; and finish up with **Fort McHenry**, site of the Star Spangled Banner and the **City of Annapolis** and the **U. S. Naval Academy** and finish with a cruise on the Chesapeake.



The trip will be 8 days, 7 nights. **Trip cost is \$1250 for SC members** (\$1350 for non-members). \$500 will reserve your spot on the trip with the remainder due July 1, 2012. Trip includes all lodging costs, transportation to and from Dulles Airport and while on the trip, all admission fees to scheduled locations and all breakfasts. Lunches and dinners and airfare to and from Washington Dulles are not included.

For information call, or write Mike Sappingfield at 26352 Via Juanita, Mission Viejo, CA 92691. If you prefer to use postal delivery instead of email, please include 2 self-addressed stamped envelopes (SASE). To register, send \$500 (made out to Sierra Club -- Sierra Sage) with the application forms to Mike at the above address. Leaders: Mary Morales, Mike & Patty Sappingfield



Sierra Sage of South Orange County
P. O. Box 6204
Laguna Niguel, CA 92607

Change Service Requested

Non-Profit Org
 U. S. Postage PAID
 Mission Viejo, CA
 Permit No. 814

Subscribers.....Check the
 "Last Issue" date on your
 label and renew early.
 Don't forget to give us your
 new address if you're mov-
 ing so you'll get your Sage
 at your new place on time!

Website:

<http://angeles.sierraclub.org/sage/>

FEATURED "HIKE OF THE MONTH"
JUNE 9, 2012

Walk and Lunch in the Circle in Orange, CA

Join us for a day leisurely strolling through antique and consignment shops, the Army and Navy shop, and other interesting stores. Eat lunch at one of the many interesting restaurants and then continue browsing through stores. Meet at the Circle at Chapman & Glassell in Orange, CA at 10 a.m. until 4 p. m. Wear comfortable walking shoes, bring a backpack, sunblock, water, and money for lunch. Check with leaders concerning travel by the Metro and/or Amtrak or for more info. Mary Morales: 949-636-2981 & Patty Sappingfield: 949-768-3610



Join the Sierra Club

Yes, I want to join! I want to help safeguard our nation's precious natural heritage. My check is enclosed.

Name _____

Address _____

City, State _____ Zip _____

F94Q -0417

Membership Categories (circle one)

	Individual	Joint
Introductory	\$15	
Standard	\$39	\$49
Supporting	\$75	\$100
Contributing	\$150	\$175
Life	\$1000	\$1250
Senior	\$25	\$35
Student	\$25	\$35
Limited Income	\$25	\$35

Send Check to Sierra Club, P. O. Box 421041, Palm Coast, FL 32142-1041 Membership not tax deductible