

Sierra Sage

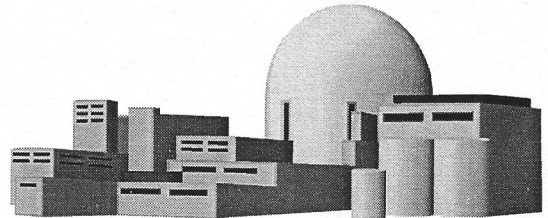


Volume 20, Issue 3 Published Bimonthly by the Sierra Sage of South Orange County Group of the Sierra Club
July 1 through August 31, 2012

You are invited to join us at our monthly meeting:

We will discuss environmental issues and conservation issues current to Orange County Residents as well as discuss the various hikes and other activities being presented in Orange County in the near future.

PROGRAM: San Onofre Nuclear Generating Station Problems; Gary Headrick, of San Clemente Green, has been following the San Onofre plan and its problems for several years will go over the various current problems which are so serious that the plant has been shut down since January and is not likely to start up for many more months, if ever.



**WHERE: Norman Murray Community and Senior Center
24932 Veterans Way, Mission Viejo, CA**

WHEN: 7:00 PM, July 24, 2012

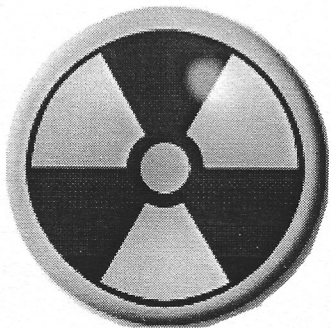
ROOM: Juniper Room

Refreshments Provided.

DIRECTIONS:

Northbound on I-5, exit at La Paz, turn right onto La Paz, cross Marguerite Park way and proceed over Oso Creek. Turn left onto Veterans Way and drive to the Murray Center Parking lot.

Southbound on I-5, exit at La Paz, turn left onto La Paz, cross Marguerite Park way and Oso Creek. Turn left onto Veterans Way and drive to the Murray Center Parking Lot



CHANGES TO THE ANGELES CHAPTER'S SOUTHERN SIERRAN AND SCHEDULE OF ACTIVITIES

At its April meeting, the Angeles Chapter's Executive Committee decided to make the following changes to the Chapter Newspaper, the *Southern Sierran*, and to the Chapters tri-annual list of hikes and other outings, the *Schedule of Activities*.

The changes were primarily for two reasons:

1. Society has been moving towards using the Internet as our main source of information for some time. The Angeles Chapter has just finish upgrading its web page and web design to make it more user-friendly and useful. The Executive Committee felt that it was time to change our approach from a print-first, Internet second, communication model to an Internet first, print second model. This means most information will be available on the internet more quickly and timely and supplemented by a print version for those who request it.
2. With the economy not as robust as it once was, cost is a huge factor. Just printing and mailing the *Southern Sierran* and the Schedule of Activities cost us around \$160,000 per year. With the Internet as the prime place to get information, and print versions going to those who request it, we anticipate cutting those cost to about one third.

Up until now, the *Southern Sierran* had been mailed to all 40,000+ members whether they wanted it or not and few, if any of the articles appeared on the Web Site. The *Schedule of Activities* had been mailed to all 40,000+ members whether they wanted it or not and the information on the Web site was not updated but once every four months.

In the new system, all news articles will be placed on the Web timely so they will be current. They will periodically be assembled into a print version and mailed to the members who request the information in print format.

In addition, the Sierra Club has created a new approach to providing information about hikes or other outings, travel adventure trips, and special events and meetings. This is called the Online Activities Registration System or OARS. It can be accessed by

Going to the Angeles Chapter Internet site, www.angeles.sierraclub.org, and clicking on **Get Outdoors**. The activities can be entered at any time, and corrected at any time. For example, if a leader decided to lead a hike in a local area two weeks from now, he or she can input it today, get it approved by the Outings Chair and the Safety Committee and it will show up on the web page immediately after approval. If a trip needs to be canceled, a cancellation notice can be added so people will know that.

We recognize that some of our members still prefer getting a print version of these two periodicals. They can still do that. They simply have to let the Angeles Chapter know that they want the print version and they will get it mailed to them.

We also realize that the *Schedule of Activities* provided more information than just outdoor activities. It also provided a great deal of information about the Angeles Chapter and its many Groups, Sections, Committees and Task Forces. It also provided contact information for the Chapter, Group, Section, Committee and Task Force Officers as well as outings leaders. The new approach will provide contact information for the outings leaders directly with the outing itself so you don't have to search elsewhere for it. The organizational information and contact information for the officers of the Chapter, Groups, Sections, Committees, and Task Forces will be provided in print format annually, usually in the first or second month of the year. Currently, our thinking is to provide this to all members as all members need to access the officers of the club.

If you want to request a printed version of the *Southern Sierran* or the *Schedule of Activities*, please fill out and return the following form to: Angeles Chapter Sierra Club, 3435 Wilshire Blvd #320, Los Angeles, CA 90010

YES, please continue to send me the printed version of the:

- Southern Sierran
- Schedule of Activities or similar

Name _____
Street Address _____
City, State Zip _____

Note: While voluntary, donations are always welcome.

ADVANCE NOTICE FUTURE TRAVEL ADVENTURES SPONSORED BY SIERRA SAGE

HISTORICAL VIRGINIA AND NEARBY AREAS

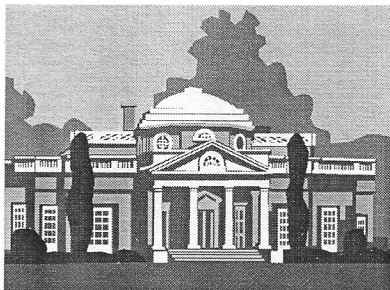
September 23 to September 30, 2012

If you always wanted to see some of the most famous historical spots in and around the State of Virginia, this is the trip for you. We will fly into Washington Dulles Airport, then van to the restored Revolutionary Era Town of **Williamsburg**; **Jamestown**, the site of the first English settlement in America; and **Yorktown** Battlefield where George Washington won the climatic battle of the Revolutionary War. From there, we will tour such historical sites as **Appomattox Court House** where Lee surrendered his army to U S Grant; to **Monticello**, home of Thomas Jefferson; to the **Shenandoah Valley**, Luray Caverns, the Skyline Drive and the **Appalachian Trail**; **Harpers Ferry**, site of John Browns revolt; then explore **Gettysburg Battlefield**, the turning point of the Civil War; and finish up with **Fort McHenry**, site of the Star Spangled Banner and the **City of Annapolis** and the **U. S. Naval Academy** and finish with a cruise on the Chesapeake.

The trip will be 8 days, 7 nights. **Trip cost is \$1250 for SC members** (\$1350 for non-members).

\$500 will reserve your spot on the trip with the remainder due July 1, 2012. Trip includes all lodging costs, transportation to and from Dulles Airport and while on the trip, all admission fees to scheduled locations and all breakfasts. Lunches and dinners and airfare to and from Washington Dulles are not included.

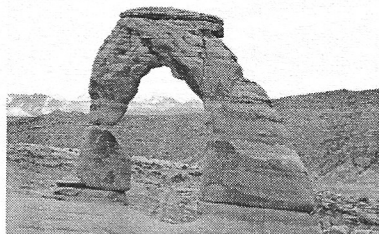
For information call, or write Mike Sappingfield at 26352 Via Juanita, Mission Viejo, CA 92691. If you prefer to use postal delivery instead of email, please include 2 self-addressed stamped envelopes (SASE). To register, send \$500 (made out to Sierra Club -- Sierra Sage) with the application forms to Mike at the above address. Leaders: Mary Morales, Mike & Patty Sappingfield



ARCHES AND CANYONLANDS

April 28--May 5, 2013

Come with us on our 8 day, 7 night fly-drive excursion to eastern Utah to explore and enjoy two of the most unusual and interesting National Parks: Arches National Park with over 2000 arches ranging from a few feet in size to several hundred feet and Canyonlands National Park with the deep canyons of the Green River and the Colorado River as they join to form the majestic Colorado we all know and love. We will fly into Grand Junction, Co and then drive in vans to Moab, Utah. We will use a local motel in



Moab for our base for the entire trip with day trips into one or the other National Parks each day. Trip cost is \$1250 with SC#, \$1350 non-member and includes lodging (double occupancy) and transportation to and from Grand Junction and each day while in Utah. All park admissions are also included. Breakfasts and three lunches will be provided. All other meals and airfare to and from Grand Junction are not included. For copies of the itinerary and application forms, please contact Mike Sappingfield (mikesapp@cox.net) or send 2 SASEs to Mike at 26352 Via Juanita, Mission Viejo, CA 92691. \$500 deposit will hold a reservation with the remainder due by March 1, 2013. (Private accommodations extra) Leaders: Mike Sappingfield and Sylvia Stevenson.

OLYMPIC NATIONAL PARK AND VICTORIA, B.C.

July 20 - 28, 2013

Join us for a 8 day, 7 night excursion to explore the wonders of the Pacific Northwest's fabulous Olympic National Park and complete the trip with a ferry ride to Victoria with opportunities to sample the delights of the City and explore Bouchart Gardens. We will return to Seattle to catch our flight home by taking a ferry winding through the San Juan Islands. Lodging, admissions, and transportation while on the trip included. Air fare to and from Seattle and most meals not included. Cost for the trip is \$1195 for Sierra Club members (\$1250 for non-members). To reserve a spot, send a \$500 deposit (check made out to Sierra Club--Sierra Sage) to Mike Sappingfield, 26352 Via Juanita, Mission Viejo, CA 92691. For information, call or email Mike at 949-768-3610 or mikesapp@cox.net. Leaders: Mary Morales, Mike & Patty Sappingfield

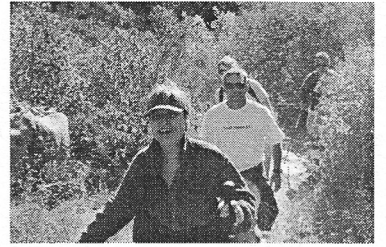
SEATTLE GETAWAY.

July 18—20, 2013

Join us for a 3 day, 2 night exploration of the wonders of the City of Seattle, Mt Rainier, and Mt. St. Helens. This can be taken in conjunction with the June 20-27 Olympic National Park and Victoria Excursion or as a separate trip. Lodging for 2 nights, transportation while on the Getaway, admissions, and breakfasts are included. Air Fare to and from Seattle and most meals are not included. To reserve a place, send \$395 for Sierra Club members (\$425 for non-members) to Mike Sappingfield a 26352 Via Juanita, Mission Viejo, CA 92691. For information, call or email Mike at 949-768-3610 or mikesapp@cox.net. Leaders: Mary Morales, Mike & Patty Sappingfield



Dutings



Jul 07 SAT SIERRA SAGE

O: MT BALDY (10,064') WITH A LIFT: 7 mi, 2500' gain/loss. We shall ride the chair lift to Baldy Notch, then hike 3.5 mi via Devils Backbone to the peak for lunch. Descend same route. Meet 7:00 am at NOC rideshare pt or 8:15 am at chair lift parking lot. Bring 3 qts water, lunch, lugsoles, \$ for chairlift. Ldr: John Kaiser. Asst: Sharon Kirk.

JUL 08 SUN SIERRA SAGE

O: COLINAS RIDGE: 5.5 mi rt, 400' gain. Short steep trail sections with good views, as we hike North along Colinas Ridge bordering Laguna Niguel and San Juan Capistrano. Meet 9 am at Dog Park next to Fire Station on Golden Lantern St in Laguna Niguel. Bring water, lugs, hat. Ldr:s Chet Stipe. Duana Miller.

JUL 14 SAT SIERRA SAGE

O: SAN JACINTO LOOP HIKES: 6 mi rt, 950' gain and 8 mi rt, 1750' gain. Two hikes from the top of the Palm Springs tramway (9000') to Round Valley via Long Valley trail outbound and the ridge trail back. Longer route will include a hike to Wellman Divide. Enjoy the cool 75 degree temp in mid summer, walking through the pine forests along cool mountain streams on the upper slopes of Mt. San Jacinto. Meet 7 am at the south entrance of parking garage of the Irvine Transportation Center (Irvine train station, Ada & Barranca) or 9 am at tramway entrance. Bring \$\$ for tramway fee (see Mike Sappingfield at tramway for discount card), lunch, water, lugsoles. Co-Ldrs: John Kaiser, Mike Sappingfield, Todd Clark, Sylvie Côté.



JUL 21 SAT SIERRA SAGE

O: BEACH HIKE, DOHENY TO SAN CLEMENTE OR TRESTLES: No gain, 4 mi to the pier or 8 mi to Trestles. Return by bus from either place. Enjoy the beach scenes and new trail along railroad. Meet 8:30 am Doheny Bch State Park Rd at Dana Harbor Dr, 1 block W of PCH in Dana Point. Park 1 block uphill from meet location. Bring water, hat, sunscreen, lunch (or buy at pier). Rain cancels. Ldr: Russ Brown. Asst: Sylvia Stevenson.

JUL 29 SUN SIERRA SAGE

O: CRYSTAL COVE BEACH BRUNCH HIKE: A "Mike's Hike". 5 mi rt. Enjoy cool ocean breezes as we walk the entire length of the Crystal Cove Beach, break for a potluck brunch, then return to Crystal Cove. Meet 8:30 am in front of Shower Bldg in the South Reef Point parking lot (ocean side of PCH) in Crystal Cove Park. Bring \$ for parking and brunch items to carry on the hike to the end of the beach to share with others. Wear comfortable shoes, hat, sunscreen. Ldr: Mike Sappingfield. Asst: Duana Miller.

AUG 11-12 SAT-SUN SIERRA SAGE

O: FORSEE CREEK TRAIL (6800') TO JACK-STRAY SPRINGS (9200') BACKPACK: 9 mi rt, 2400' gain. Join us as we backpack to Jackstraw Springs. This is a strenuous hike based upon altitude gain, but done at a moderate pace. Explore area around camp, relax, read, take pictures, rest. This area is heavily forested with beautiful old growth forest. Return same way next day. Be prepared to carry one gallon of water, depending on conditions. Not a beginner trip; must have backpacking experience. Bear canister required. Wilderness permit required (leaders to provide). Vehicles must display USFS adventure pass. Rain cancels. Contact leaders for more information. Ldrs: Todd Clark, Sylvie Côté.



AUG 12 SUN SIERRA SAGE

O: OSO CREEK: 6.5 mi rt, 400' gain. Hike paved trails along the creek and up thru the Jeronimo Open Space, then dirt trail to Naciente Ridge overlooking Trabuco Cyn. Meet 8:45 am at Norman Murray Senior Center in Mission Viejo (from I-5, E on La Paz, L on Veterans Way). Bring water, hat, comfortable shoes. Rain cancels. Ldr: Chet Stipe. Asst: Don Clarence.

SEP 02 SUN SIERRA SAGE, EASY HIKERS

O: HOLY JIM FALLS: A "Mike's Hike". 4 mi rt. 200' gain. Join us for a moderately paced hike through a shady canyon to a local waterfall. Who knows, there might even be water this late. Meet 8 am at dirt parking area south of bridge where Plano Trabuco/Live Oak Canyon Road crosses Trabuco Creek in Trabuco Canyon. We will carpool in to the trailhead. FSP required at trailhead if you drive your own vehicle beyond the meeting place. Rain cancels. Bring water, munchies, hat, mosquito repellent, and sunscreen. Ldr: Mike Sappingfield. Asst: Duana Miller

SEP 19 WED ORANGE COUNTY

O: Salt Creek Corridor to Dana Point: 6 mi, 200' gain. Amble down Salt Creek on the bike trail to the beach, then up to Dana Point Headlands on the new trail, through a residential area to descend to Dana Point Harbor and optional lunch. Bus return. Bring water, snack if desired, bus fare. Meet 9:00 am at Chapparosa Park, Laguna Niguel. From Crown Valley Pkwy, S on Golden Lantern, R on Chapparosa to Park at end. Ldr: Sid Alpert. Asst: Judy Mulry

SEP 15 SAT SIERRA SAGE

O: LAUREL CYN & STAGECOACH LAUREL: 5 mi loop, 1000' gain. Hike up Laurel Cyn to Serrano Ridge, then steep down-hill on Camarillo Cyn, and return on newly-opened Stagecoach Laurel trail. Meet 8:30 am, Laguna Coast Wilderness Visitors Center parking (\$3) on Laguna Cyn Rd, just South of El Toro Rd junction. Bring water, lugsoles, hat. Rain cancels. Ldr: Chet Stipe. Asst: Michael Metcalf.

SEP 22 SAT SIERRA SAGE

O: THUNDER (8587'), TELEGRAPH (8985'), AND TIMBER (8303') MOUNTAINS: 10.2 mi rt, 2000' gain. Join us as we hike the "3 Ts". We meet/start at the Mount Baldy ski lift area (6320'), take the chair lift up to the Baldy Notch (7840'), then hike the three Ts. From Timber Mountain, we will return the same way. If chair lift is not working, it will add an additional 1500' gain. Not a beginner hike. Must be comfortable hiking long distances at altitude. Strenuous daylong hike with possible spectacular views of the mountains. Meet 8 am at the parking lot of the lift station. Bring hat, jacket, sunscreen, lunch, 3-4 qts water, 10 essentials, \$ for lift (approximately \$20). Rain and/or park closure cancels. Ldrs: Todd Clark, Sylvie Côté.

SEP 26 WED ORANGE CTY, SIERRA SAGE

O: Colinas Ridge: 5.5 mi, 400' gain. Short steep trail sections with good views, as we hike NORTH along Colinas Ridge bordering Laguna Niguel and San Juan Capistrano. Meet 9:00 am at Dog Park next to the fire station on Golden Lantern St, ca 2 mi S of Crown Valley Bl in Laguna Niguel. Bring water, lugsoles, hat. Rain cancels. Ldr: Chet Stipe. Asst: Gail Roy

OCT 07 SUN SIERRA SAGE

O: TRABUCO RIDGE & HELICOPTER HILL: 4 mi loop, 900' gain. A series of San Juan Capistrano trails between Rancho Viejo Road and Mission Viejo borderline, with amazing views of wilderness and urban scenes from several steep hills. Meet 8:45 am, Park&Ride lot at Junipero Sierra Rd and Rancho Viejo Rd, 1 block E of I-5 Fwy in San Juan. (NOT the South OC Rideshare). Bring water, hat, snack, comfortable shoes. Rain cancels. Ldr: Chet Stipe. Asst: n Clarence. **C E** hiking

OCT 20 SAT SIERRA SAGE

O: ALISO PEAK TO BADLANDS: 6.5 mi, 1000' gain. Join us as we hike the Valido Trail to Aliso Peak (683'), continuing up to the overlook (936'). We will then proceed down the Seaview Trail to Badlands Park and the Badlands Trail to the overlook and return. Somewhat strenuous hike with spectacular views of the ocean. Stop for snack in Badlands Park. Bring hat, light jacket, sunglasses, sunscreen, snack, 2 qts water. Rain cancels. Meet 9 am at the trailhead. From PCH in South Laguna, turn on West Street, drive up to Via Valido and turn L to the trailhead. Ldrs: Sylvie Côté, Todd Clark.

OCT 21 SUN SIERRA SAGE OF S ORANGE CO, EASY HIKERS, LITTLE HIKERS

C: DONNA O'NEILL LAND CONSERVANCY: 5 mi, 200' gain. Longer than usual hike in one of the most beautiful areas in S Orange County. Children 5 yrs and old with parent welcome. Rain cancels. Meet 8:30 am at South Orange County rideshare. Donation to DONLC: \$10-adults; \$5-children, to support the work of the Conservancy. Ldr: Duana Miller. Asst: Mike Sappingfield.



OCSS CONDITIONING HIKES - EVERY TUES/THUR @ 6:30 PM

O: IRVINE TURTLE ROCK. Easy/Moderate/Tiger paced hikes, 4-7 mi rt on hilly trails. Bring Water, light hiking boots. 405 Fwy, exit S at University/Jeffery, L on Ridgeline, L on Turtle Rock, pass Sunnyhill, L into parking lot of Turtle Rock Community Park, Ldrs, John LaRue, Markey and Robert Neighbors, Kim Gunderman, Ron Campbell, Gigi Logan, and others.

RIDESHARE MEETING POINTS

N Orange Co... Park-N-Ride, E side of Tustin Av just S of Lincoln Av, Orange.

S Orange Co... Ortega Plaza parking lot SE corner, Ortega Hwy/Rancho Viejo, San Juan Capistrano

Tustin ... Redhill Ave on N side (Fwy side) of Stater Bros Market just SW of Redhill Ave exit from Santa Ana Fwy

STARR RANCH BBQ THANK YOU

A big thank you for everyone who came to our 13th annual fundraiser at Starr Ranch on May 20th. An especially huge thank you for all of those who volunteered to work to make it a special event for all. We want to acknowledge the lead volunteers in the different areas for organizing and guiding the other volunteers. They are:

Patty Sappingfield,	Food and Condiment area
Bob Hansen,	Grilling Area
Chet Stipe,	Hikes and Birdwalks
Penny Elia,	Beverages
Duana Miller	Opportunity Drawing
Sharon Koch	Sage Information Table
Judy Bartholomew	Registration Table.
Pete and Sandy Desimone:	Hosts of Starr Ranch
Chuck Buck	Band Leader

Special Thanks to Bayhawk Brewery for the brew.

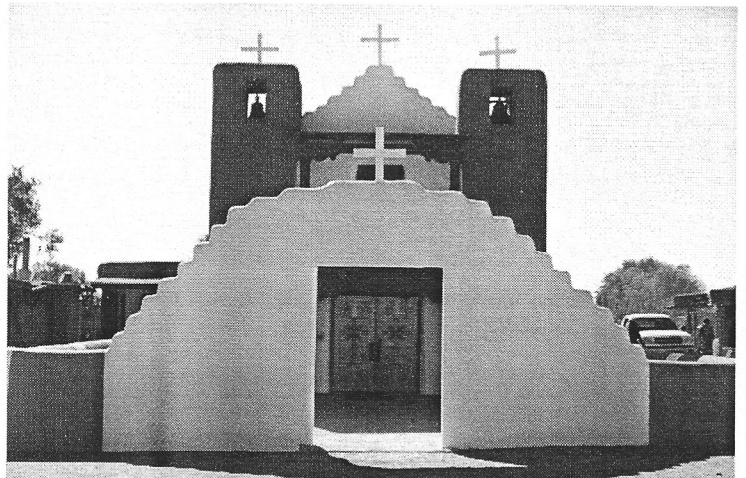
HIKE LEADERS

Alpert, Joyce & Sid	949-380-0420	Lipman, Bernie	714-879-7593
Barnes, Patricia	714-827-9744	Maurer, Helen & Ed	949-768-0417
Beall, Andy	714-633-5563	Maynard, Joe	562-981-9111
Bean, Denny	714-525-3214	McCoppin, Garry	714-269-5078
Bower, Necia	949-859-3773	Metcalf, Mike	949-492-6277
Brown, Russ	949-481-5295	Miller, Duana	949-831-0890
Clarence, Don	949-709-2967	Mulry, Judy	949-588-1347
Clark, Todd	714-803-0195	Rau, Gabriele	949-559-9212
Cote, Sylvie	949-547-2998	Reed, Fred	714-325-2710
Creighton, Barbara	714-960-3949	Roy, Gail	949-981-8523
Denton, Dea	949-581-8396	Sappingfield, Mike	949-768-3610
Doerring, Ross	949-244-3415	Sappingfield, Patty	949-768-3610
Len Gardner	lgardner@fea.net	Schlegel, Ed	949-212-5655
Garner, Julie	714-335-1579	Schrantz, Ron&JoAnn	714-995-8240
Hansen, Bob	949-586-4928	Siebert, Robert	714-997-0190
Johnson, Eric	714-524-7763	Specht, Donna	714-963-6345
Jones, Ron & Leora	714-773-5570	Stipe, Chet	949-363-1142
Kaiser, John	714-968-4677	Stevenson, Sylvia	949-487-2660
Kirk, Sharon	714-545-1149	Taylor, Dave	949-770-9409
Landesman, Pita	949-425-8966		



New Mexico Adventure October 12-19, 2013

Albuquerque Balloon Fiesta, Santa Fe, Taos and Taos Pueblo, Acoma Sky Pueblo, Chaco Canyon, Los Alamos, and Bandelier National Monument are just some of the many attractions on this fun filled exploration of the "Land of Enchantment". \$1195 for Sierra Club members (\$1250 for non-members). The trip includes lodging (double occupancy) for 7 nights; Admission fees for Balloon Festival, National Park and Monuments visits, Taos and Acoma Pueblo visits, and museum admissions for scheduled visits; breakfasts, two lunches, and several happy hours; and all transportation while in New Mexico. Most meals, and transportation to and from New Mexico not included. For information, contact Mike Sappingfield at mike-sapp@cox.net, or phone 949-768-3610. A \$500 deposit will reserve your place on the trip with remainder due July 1, 2013. Mail reservation request and \$500 deposit, payable to Sierra Sage--Sierra Club, and 2 SASE, to Mike Sappingfield at 26352 Via Juanita, Mission Viejo, California 92691. Leaders: Mary Morales, Mike & Patty Sappingfield



DIRECTORY OF SIERRA SAGE OFFICERS

Title	Name	Phone	Email
Chair	Duana Miller	949-831-0890	duana103@hotmail.com
Vice Chair	Todd Clark	714-803-7195	clarkta@hotmail.com
Secretary	John Kaiser	714-968-4677	jkai39@gmail.com
Treasurer	Patty Sappingfield	949-768-3610	solanese@cox.net
Outings Chair	Mike Sappingfield	949-768-3610	mikesapp@cox.net
Asst Outings Chair	Todd Clark	714-803-7195	clarkta@hotmail.com
Asst Outings Chair	Sylvie Coté	949-547-2998	mlsylvie@hotmail.com
Membership Chair	Kaye Clarence	949-709-2967	kayeclarence@cox.net
Newsletter Editor	Mike Sappingfield	949-768-3610	mikesapp@cox.net
Webmaster	Bob Hansen		awildtrout@gmail.com
Circulation Chair	Patty Sappingfield	949-768-3610	solanese@cox.net
Political Chair	Sharon Koch	949-717-7745	slkoch@ix.netcom.com
Chapter Rep	Sharon Koch	949-717-7745	slkoch@ix.netcom.com
Program Chair	Sylvia Stevenson	949-487-2660	sylvia_stevenson@yahoo.com
Executive Comm	Garry McCoppin	714-250-5078	mccoppin@cox.net
FOF Task Force	Bill Holmes	949-496-5323	billten4@sbcglobal.net
Aliso Hobo Ridge TF	Penny Elia		greenp1@cox.net
Santa Ana Mtns TF	John Kaiser	714-968-4677	jkai39@gmail.com
San Onofre TF	Gary Headrick		garyheadrick@gmail.com

Sierra Sage Executive Committee Meetings.

(normally on the first Thursday of each month. Open to all Sierra Club Members. Call Duana Miller for location, time and agenda.

Orange County Conservation Committee

(normally on the 3rd Tuesday of each month. Open to all interested members. Call Chuck Buck, 949-240-8224 for location, time, and agenda)

Orange County Political Committee. (Normally on the 3rd Thursday of each month. Call Sharon Koch for location, time, and agenda)

Sage Outings Committee. Meets 3 times a year in February, June, and October to plan and schedule outings for the future months. Call Mike Sappingfield for date, time and location. Hikers interested in becoming Outings Certified Leaders are welcome.

Orange County Global Warming Committee

Meets monthly in the community room at the REI Store in Tustin (I-5 and Jamboree) on the 2nd Sunday of each month from 3 to 5 pm. Call Chuck Buck at 949-240-8224 for agenda.

INTERNET ADDRESSES:

Angeles Chapter: www.angeles.sierraclub.org

Sierra Sage: www.angeles.sierraclub.org/sage

HELP NEEDED!

Ever think about getting involved with the Sierra Club, other than paying dues, of course? The Sierra Club is a grass roots organization with all the positions and all of the work done by volunteer members like you and I. All of the decisions are also made by volunteer members like you and I. Some of the areas which could use some help are:

1. Serve as a committee member on any of the five committees listed at the left hand column. Contact the Committee Chair to volunteer.
2. Hike and walk leader. We conduct 5 to 10 hikes or walks each month each one requires at least two leaders. Interested in becoming a leader? Contact Mike for assistance.
3. Newsletter assistance. Putting out a newsletter six times a year requires good stories as well as design layout and other work. Contact Mike to volunteer
4. Protect the Wild Places of the Earth. All of our local conservation activities require a lot of folks to successfully save wild places with all of the demands to develop them. Contact the Task Forces Chairs (see above directory) for more information..



*Sierra Sage of South Orange County
P. O. Box 6204
Laguna Niguel, CA 92607*

Change Service Requested

Non-Profit Org
U. S. Postage PAID
Mission Viejo, CA
Permit No. 814

Subscribers.....Check the
"Last Issue" date on your
label and renew early.
Don't forget to give us your
new address if you're mov-
ing so you'll get your Sage
at your new place on time!

Website:

<http://angeles.sierraclub.org/sage/>

FEATURED "HIKE OF THE MONTH"

SAN JACINTO LOOP HIKES: 6 mi rt, 950' gain and 8 mi rt, 1750' gain. Two hikes from the top of the Palm Springs tramway (9000') to Round Valley via Long Valley trail outbound and the ridge trail back. Longer route will include a hike to Wellman Divide. Enjoy the cool 75 degree temp in mid summer, walking through the pine forests along cool mountain streams on the upper slopes of Mt. San Jacinto. Meet 7 am at the south entrance of parking garage of the Irvine Transportation Center (Irvine train station, Ada & Barranca) or 9 am at tramway entrance. Bring \$\$ for tramway fee (see Mike Sappingfield at tramway for discount card), lunch, water, lugsoles. Co-Ldrs: John Kaiser, Mike Sappingfield, Todd Clark, Sylvie Côté.

Join the Sierra Club

Yes, I want to join! I want to help safeguard our nation's precious natural heritage. My check is enclosed.

Name _____

Address _____

City, State _____ Zip _____

F94Q -0417

Membership Categories (circle one)

	Individual	Joint
Introductory	\$15	
Standard	\$39	\$49
Supporting	\$75	\$100
Contributing	\$150	\$175
Life	\$1000	\$1250
Senior	\$25	\$35
Student	\$25	\$35
Limited Income	\$25	\$35

Send Check to Sierra Club, P. O. Box 421041, Palm Coast, FL 32142-1041 Membership not tax deductible