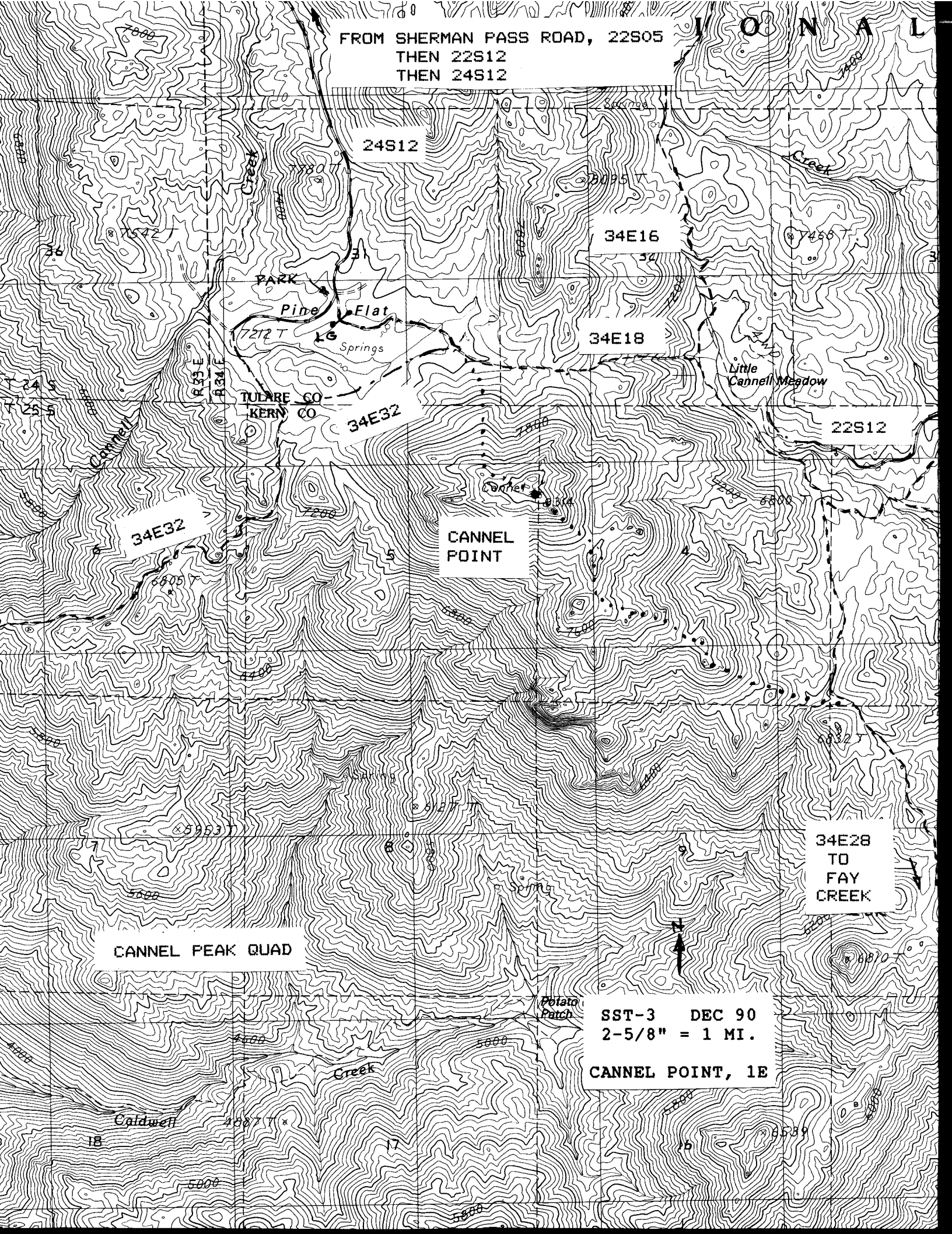


FROM SHERMAN PASS ROAD, 22S05
THEN 22S12
THEN 24S12

J O N A L



TULARE CO
KERN CO

CANNEL PEAK QUAD

CANNEL
POINT

34E28
TO
FAY
CREEK

SST-3 DEC 90
2-5/8" = 1 MI.
CANNEL POINT, 1E